

# Family Guide to Supporting Students during Remote MAP Week

Academy for Precision Learning



# MAP Growth Measurement Week



November 9-13, 2020



## Upper School MAP Schedule M/T/Th/F

8:30-9:20: Homeroom

9:30-10:30: MAP session 1

10:30-11:00: Break/structured self-care

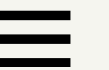
11:00-12:00: MAP session 2

12:00-1:00: Lunch

1:00-2:00: MAP session 3

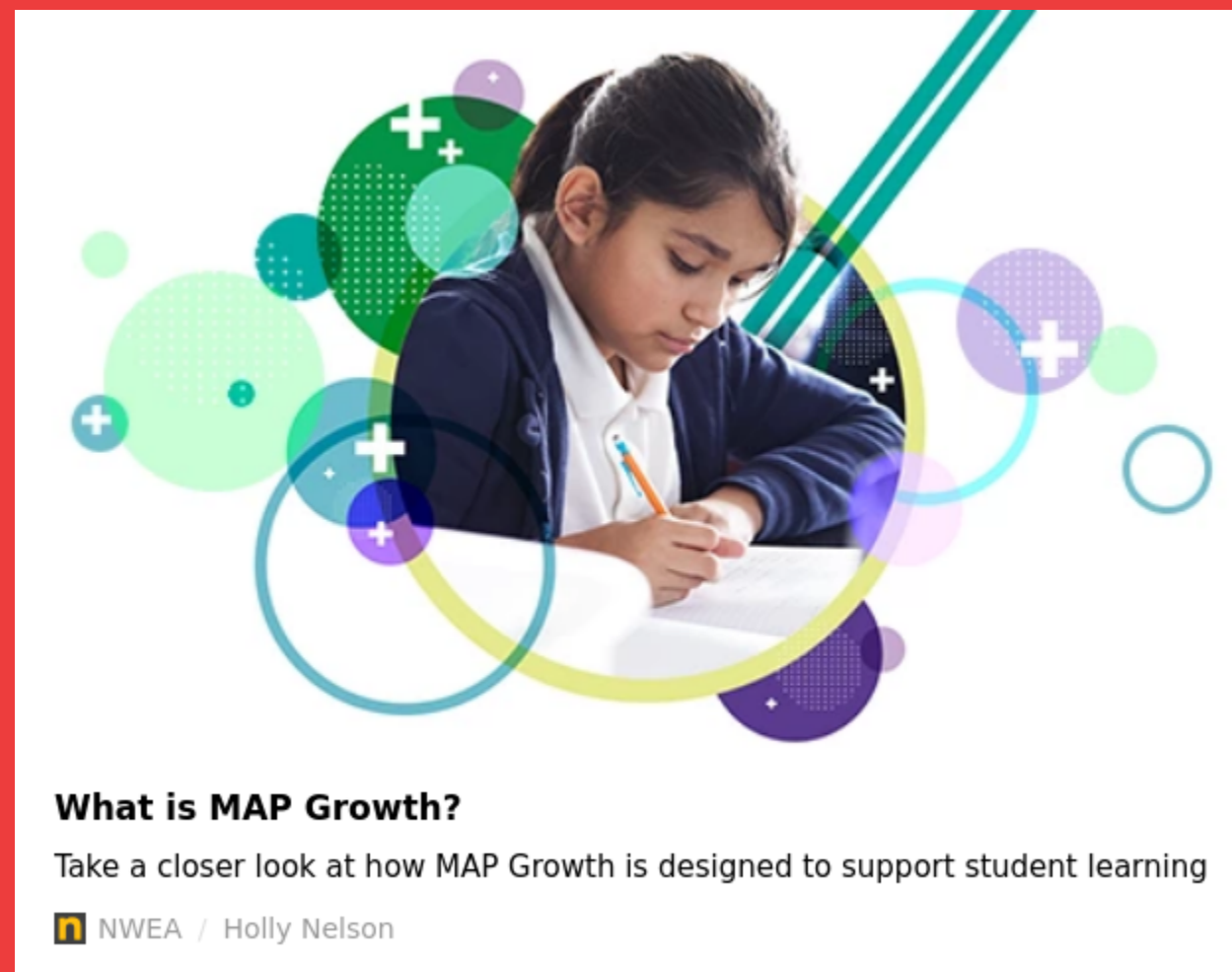
2:10-2:20 :Homeroom

2:25-3:30: Electives



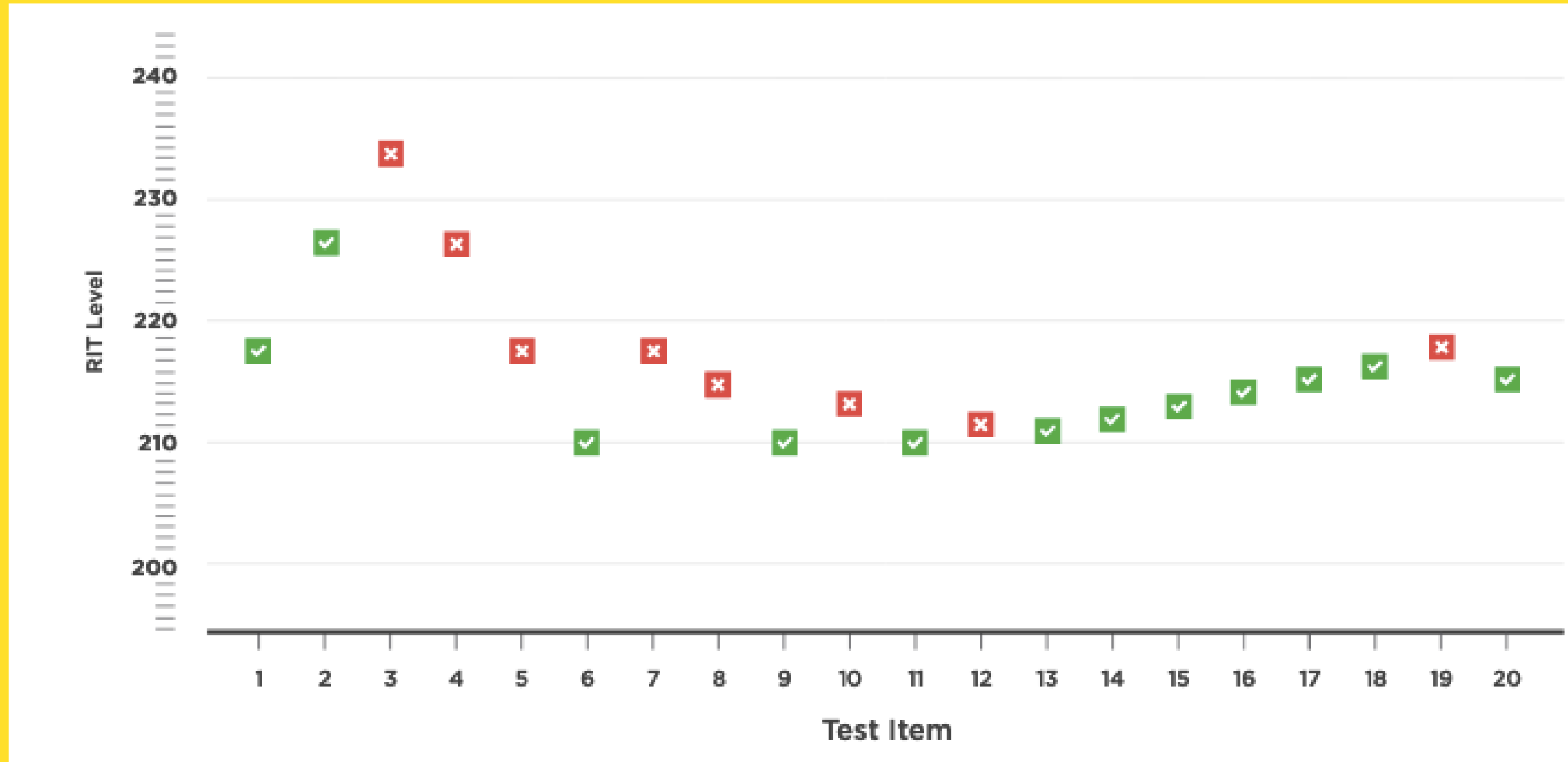
# What is MAP Growth Measurement?

MAP Growth is a computer-adaptive measurement. If your child answers a question correctly, the next question is more challenging. If they answer incorrectly, the next one is easier. This type of assessment challenges top performers without overwhelming students whose skills are below grade level.





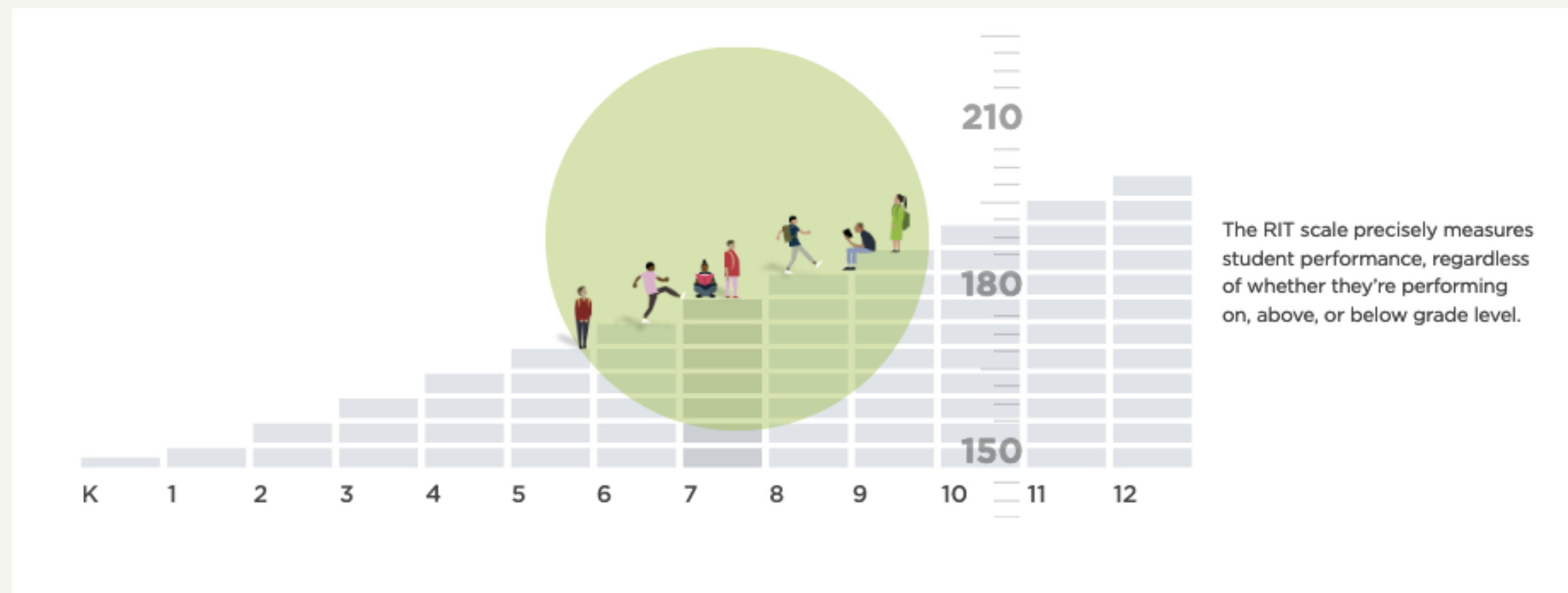
**MAP Growth begins with a question at each student's grade level and adjusts the level of difficulty based on individual performance**





# What MAP Growth measures

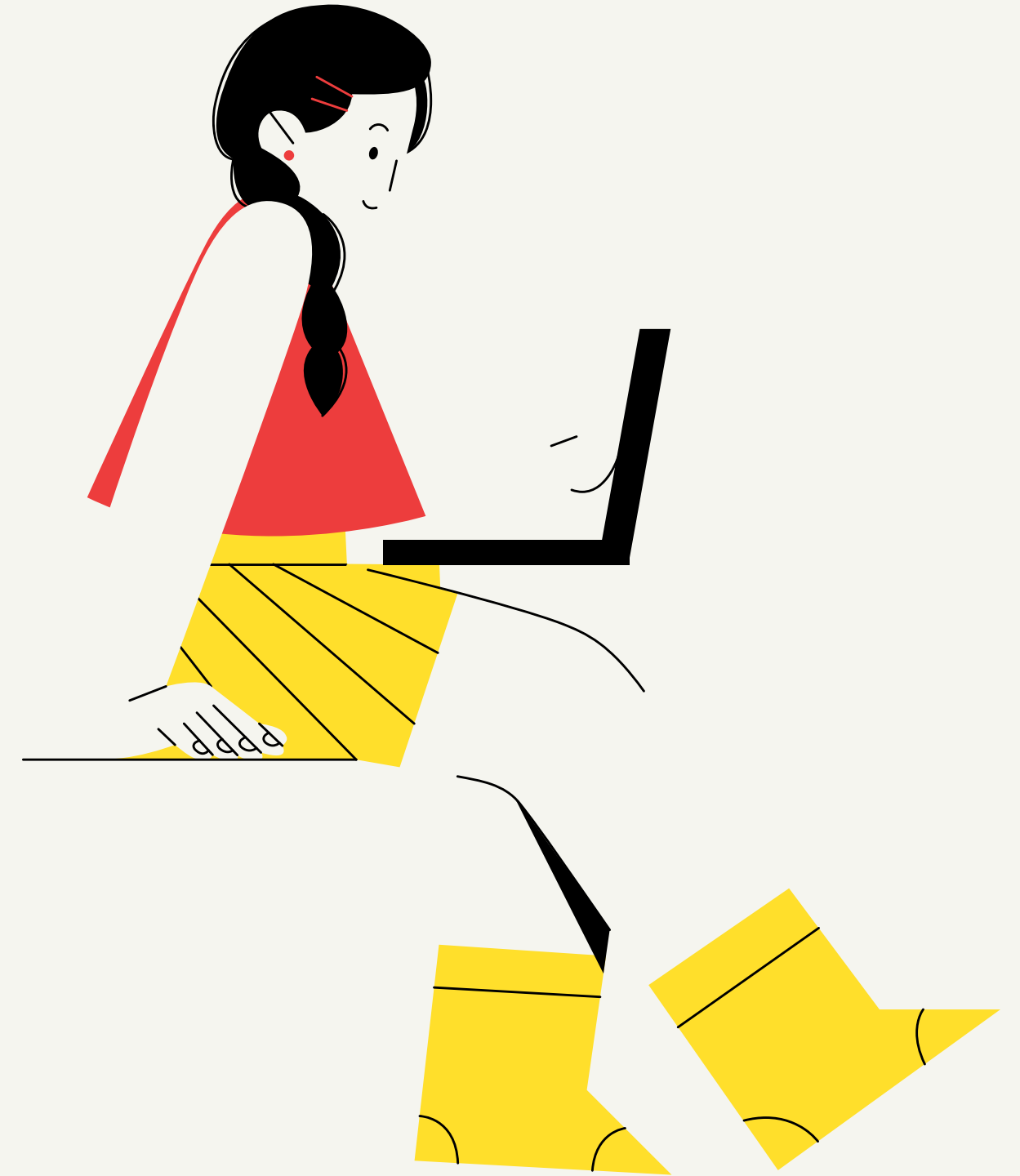
MAP Growth uses a RIT scale to accurately measure what students know, regardless of their grade level. It also measures growth over time, allowing you to track your child's progress throughout the school year and across multiple years. Once your child completes a MAP Growth test, they receive a RIT score.



# Your child's RIT score

RIT scores have the same meaning across grade levels.

- If a fourth-grade student and an eighth-grade student have the same RIT score in reading, then they are testing at the same level in that subject.
- This stable scale allows teachers to accurately measure each student's academic growth throughout the school year and over time.
- You can use your child's RIT score to help them meet their goals.



# Common Questions:



**How do schools and teachers use MAP Growth scores?**

Teachers can use the score to inform instruction, personalize learning, and monitor the growth of individual students.

**How often will my child take MAP Growth tests?**

APL will administer MAP Growth measurements to students in November, March, and June. Some schools choose to administer tests only twice a year.

**Is MAP Growth a standardized test?**

MAP Growth is administered periodically during the school year. Instead of asking all students the same questions, it adjusts to each child's performance—giving a more accurate measure of what they know.

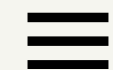
Teachers also receive results right away, which enables them to react more quickly.





# Preparing your Child for MAP Growth at Home

1. Conduct a device readiness check online to ensure your child's home device will host MAP without technical issues
2. Talk with your child about MAP Growth and the significance behind doing their best. This warmup is helpful in guiding that conversation.
3. Encourage your child to do their best and not to rush.
4. Encourage your child to communicate with their teacher over Zoom during the session to answer any questions or technical issues.
5. Prepare their measurement environment to be comfortable and have limited distractions.





# Questions...

